

East Central High Protein Savings



December 2011

7JE1100 Kanoo (Impuls x EX-90 Henry-P)

~~\$24~~

~~\$18~~



- Elite JPI at +175 for this Impuls son
- +966 milk and +505 CM\$ with double plus components
- Medium sized cows with adequate strength



Use on: Action, Fanton, Award, Finalist, Harvest and latola daughters

Kutz Kanoo 5674 (VG-86)

7JE953 Dallas-PP (Mygent-P x EX-91 Kody)

~~\$24~~

~~\$18~~



- Homozygous polled...100% guaranteed calves are born polled!
- Outcross pedigree makes for reduced inbreeding
- +1028 of milk at 85% Rel



Use on: Eclipses-P, Riley, T-Bone, Kanoo and Action daughters

Forest Glen Dallas Noel-P

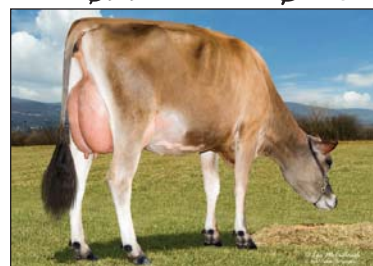
7JE865 Kyros (Action x EX-90 Big Time)

~~\$22~~

~~\$16~~



- +4.6 SCR at 94% Rel...conception specialist!
- Outstanding linear profile, no holes
- +791 milk and double plus components



Use on: Jace, Jacinto, Ray, Rocket, Impuls and latola daughters

WF Kyros Dakota

7BS813 Tressel (Premuim x EX-94 Jason)

~~\$16~~

~~\$11~~



- High profile, Premuim Son, New release
- Cow family has 52 All-American Nominations
- +0.6 for Type, +0.42 UDC, +1.07 FLC
- +0.1 SCR and 5% CE



Use on: Dynasty, Parker, BouMatic, Power Surge and Vigor daughters

Springhill T Dominique OCS - 2011 All-American Nom.

7BS843 Pepper (Wondermint x EX-94 "Candid")

~~\$14~~

~~\$10~~



- The perfect spice for Type, Production and Index
- An elite genomic super sampler at +213 PPR
- Elite cow family with All-American heritage

Use on: Dynasty, BouMatic, Agenda and Pollyden daughters

East Central High Protein Savings

December 2011

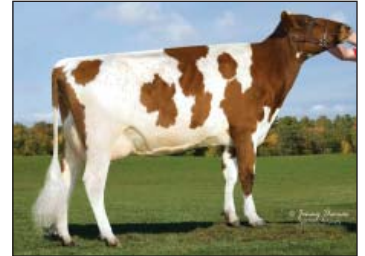


7A486 Billick (Raven x EX-90 Pardner)

- +502 of Milk and +1.2 PL
- Solid linear profile...frame improver
- +411 PTI on 35 daughters for this new graduate

Use on: Burdette, Calimero, Oblique and Ristourn daughters

\$16 \$11



Scapeland Billick Misty

7MS Ace (B-Jurist x EX-92 Derek)

\$15 \$10



- +177 PPR, an elite in the breed
- +0.31% Fat and +77 F...Wow!
- +524 CM\$ - Breed Leader

Use on: Kourt, Othello, Peerless and Megadeth daughters

7GU405 Grumpy (Ron x EX-90 Royal Oak)

\$18 \$13



- +653 Milk, +0.02% P and +0.07% F
- Outstanding udders (+1.70 UDC) with high wide rear udders
- +149 PTI, ranks as one of the best in the breed

Use on: Banger, Hawk, Hudson, Natural and Spider daughters



GT-Golden J Grumpy Cleo (EX-90)

7GU428 Gary (Skipper x EX-90 Royal Oak)

\$15 \$10

- New Release
- Check out his linear, right sided with frame & strength
- +784 Milk, from same cow family as 7GU405 Grumpy
- +1.4 Type, +1.4 UDC, +1.4 FLC...no holes breeding system

Use on: Aaron, Alstar, Yogi Bear, Les and Challenge daughters



Spring Walk Gary Edith (VG-85)